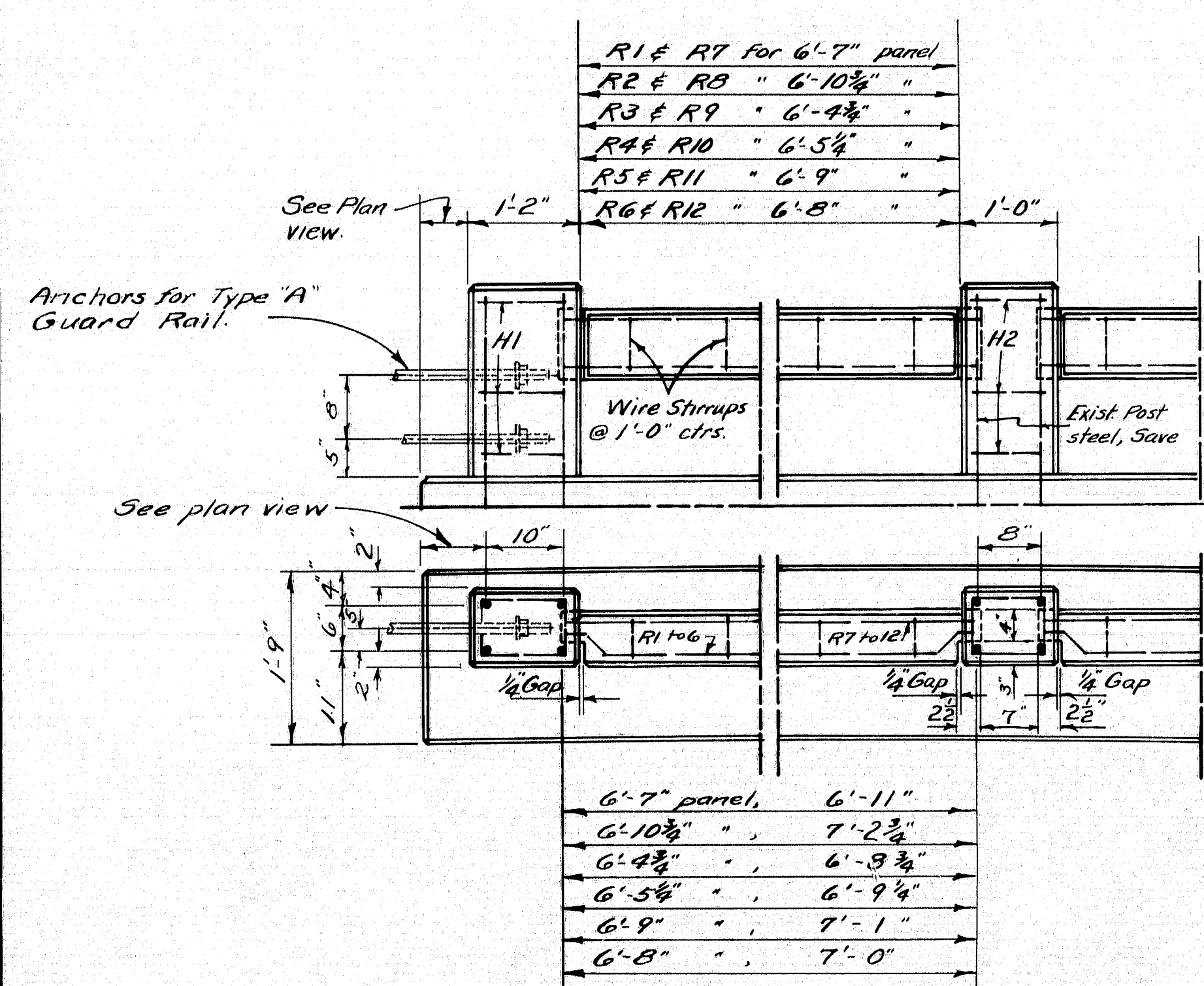
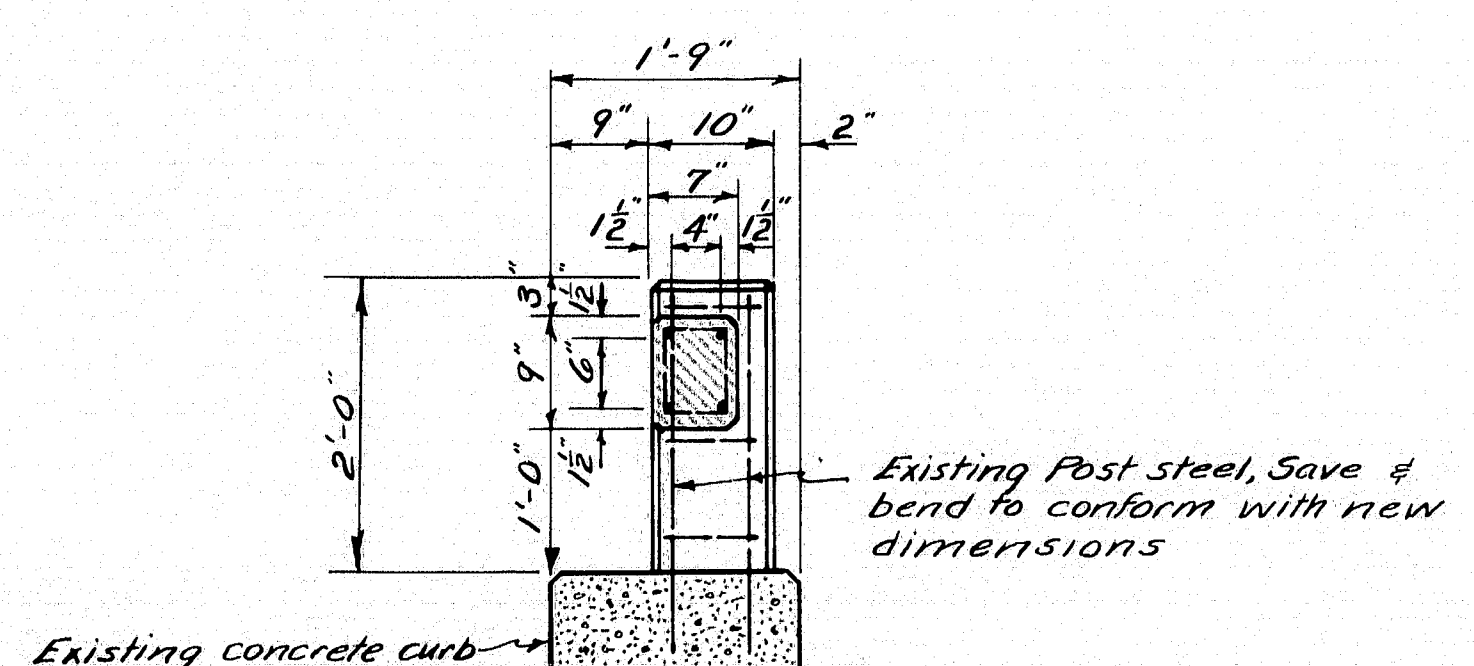


These dimensions are in accordance with original plans and should be checked against actual field dimensions before rail bars are precast.

PLAN



RAIL DETAIL



RAIL NOTES
 Remove existing concrete Rail & Post to top of curbs. Save existing post steel and cut 1'-10" above top of curb.
 Rail bars to be precast and set in position so that the tongue ends project 2 1/2" into the post forms. Wrap the tongue ends with two layers of heavy roofing.
 Make wire stirrups from a single strand of #9 annealed wire, making one complete turn around each steel bar "R".
 Chamfer all exposed edges 1/2"

REINFORCING STEEL				
R1 = 5'-10 1/2" R2 = 6'-2 1/4" R3 = 5'-8 1/2" R4 = 5'-8 3/4" R5 = 6'-0 1/2" R6 = 5'-11 1/2" H1 & H2				
Dimensions are to E of bars.				
BENT BARS				
MARK	SIZE	NO.	LENGTH	LOCATION
R1	#4	12	7'-1"	Concrete Rail Bars
R2	#4	14	7'-4 3/4"	"
R3	#4	18	6'-10 3/4"	"
R4	#4	18	6'-11 1/2"	"
R5	#4	14	7'-3"	"
R6	#4	12	7'-2"	"
H1	#3	12	3'-5"	End Rail Posts
H2	#3	13	3'-1"	Inter. Rail Posts
STRAIGHT BARS				
R7	#4	12	6'-10 1/2"	Concrete Rail Bars
R8	#4	14	7'-2 1/4"	"
R9	#4	18	6'-8 1/4"	"
R10	#4	18	6'-8 3/4"	"
R11	#4	14	7'-0 1/2"	"
R12	#4	12	6'-11 1/2"	"

DESIGN - SIROIS
 TRACE - SIROIS
 CHECK - ~~SIROIS~~
 BRIDGE NO. 3256
 SURVEY PLOT -
 STATE HIGHWAY COMMISSION
 BRIDGE DIVISION
RAILROAD CROSSING
 OVER THE TRACKS OF THE
CANADIAN PACIFIC RAILWAY
 IN THE TOWNSHIP OF
SAPLING
SOMERSET COUNTY
 RAIL DETAILS

